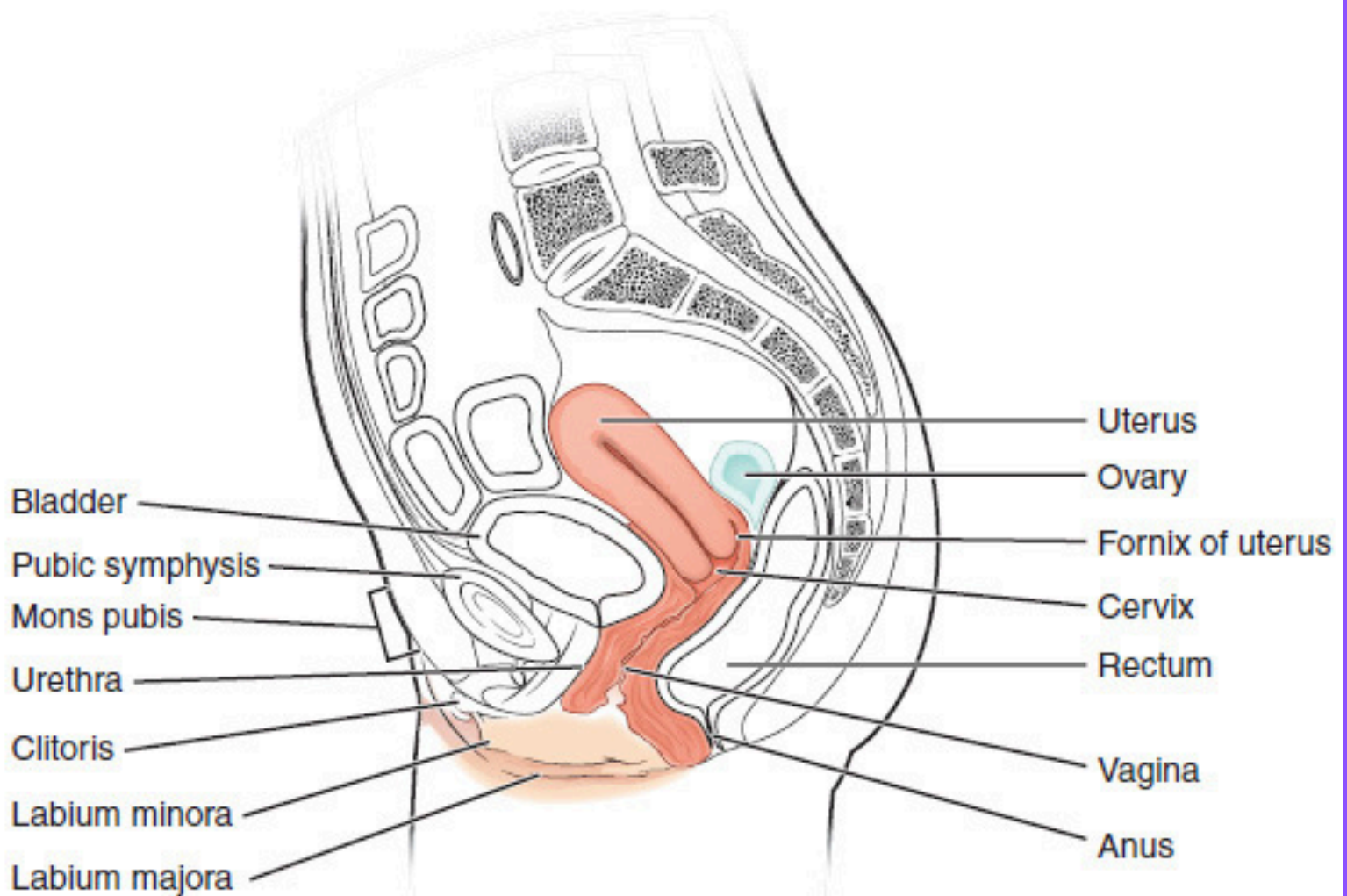
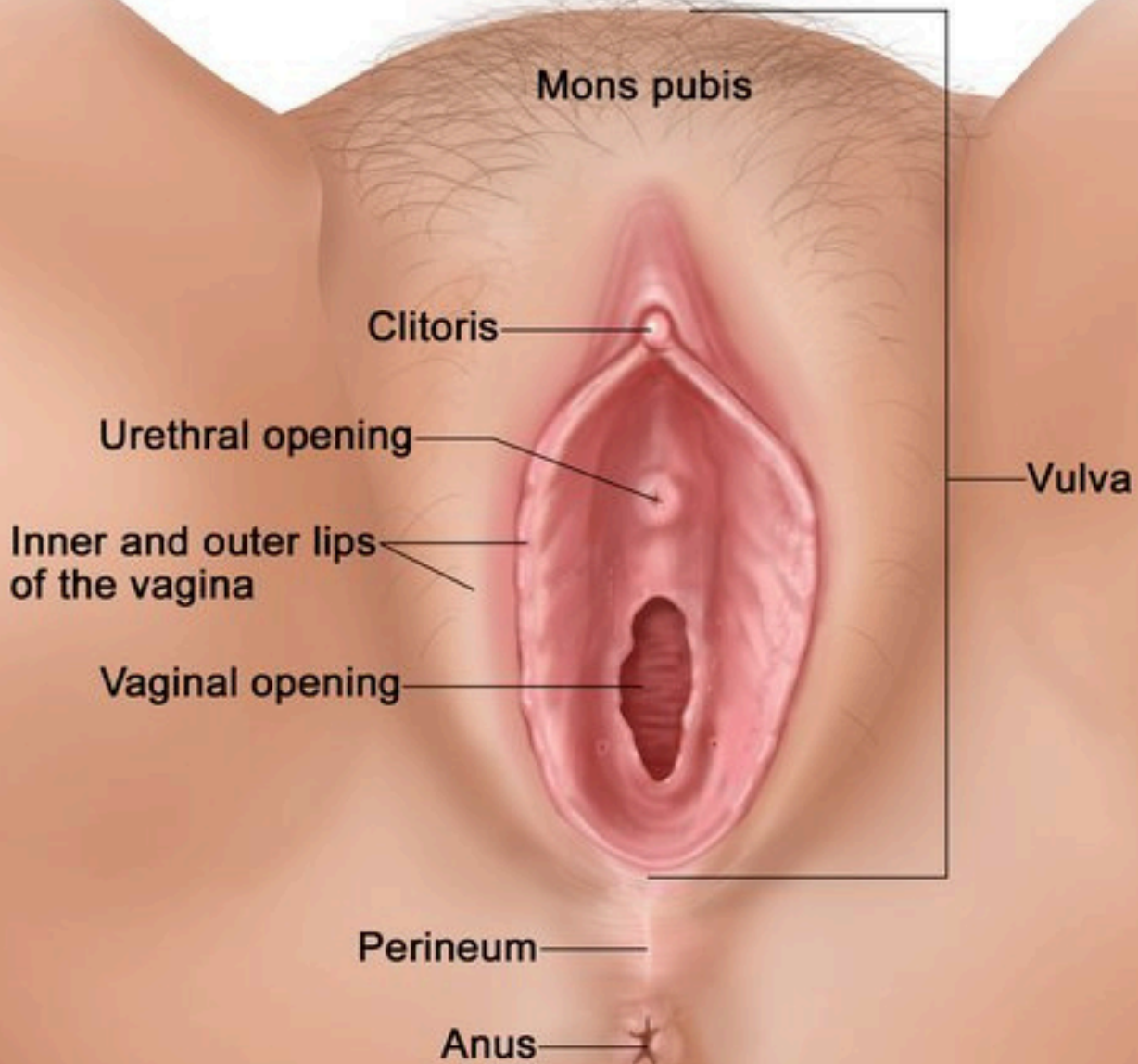


Below is the female reproductive system anatomy. As you can see the vagina leads to the cervix and uterus. Sperm should be deposited by the male into the females' vagina. The sperm then heads north to the uterus where the female egg is located and waits to be fertilized. After the egg is fertilized; a human baby starts to form!



(a) Human female reproductive system: lateral view

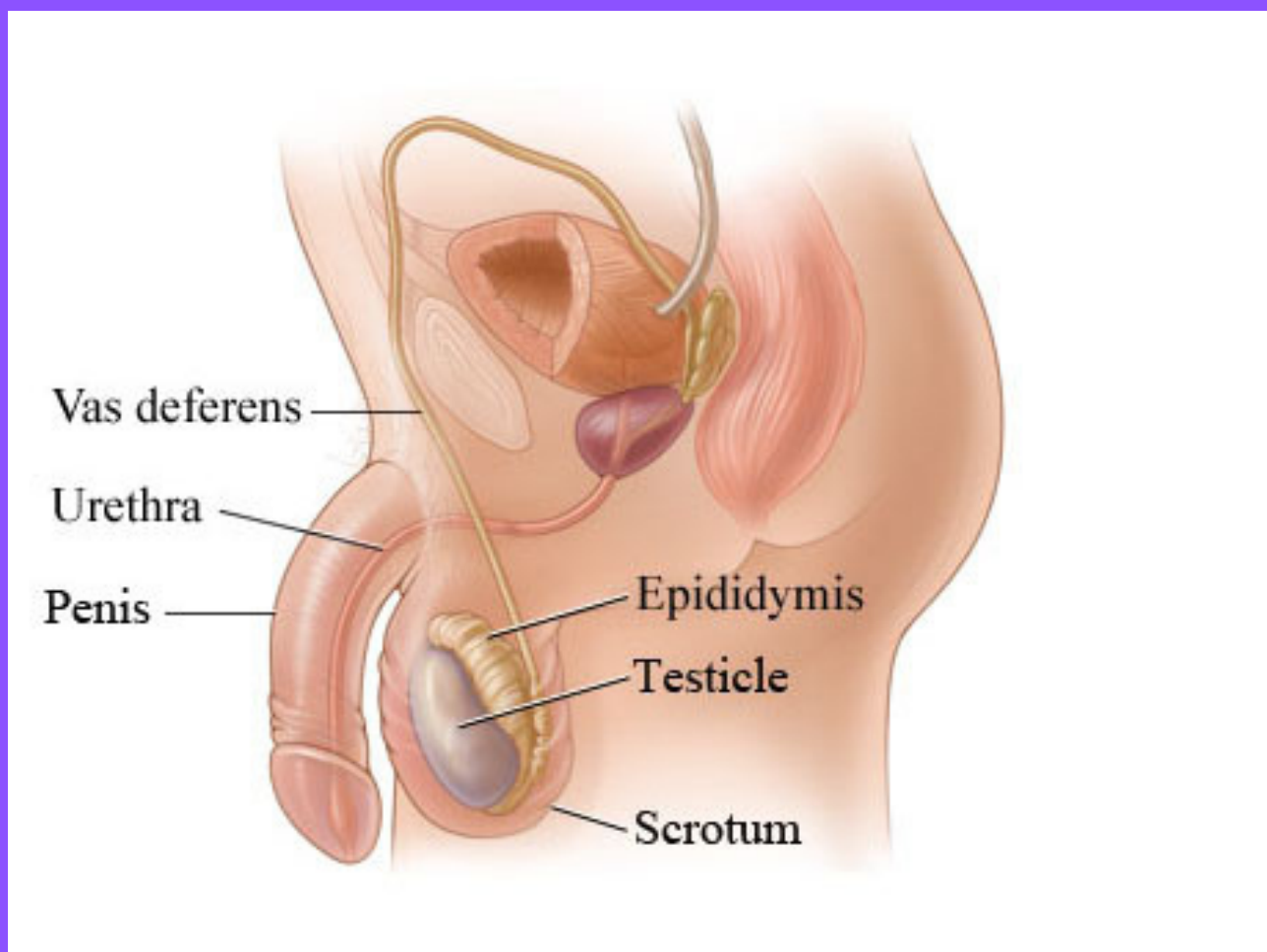
Anatomy of the Vulva



The main parts of the male anatomy are the penis, urethra, and vas deferens. The penis is used for sex when erect or hard. When the penis is flaccid a man can pee out of his penis.

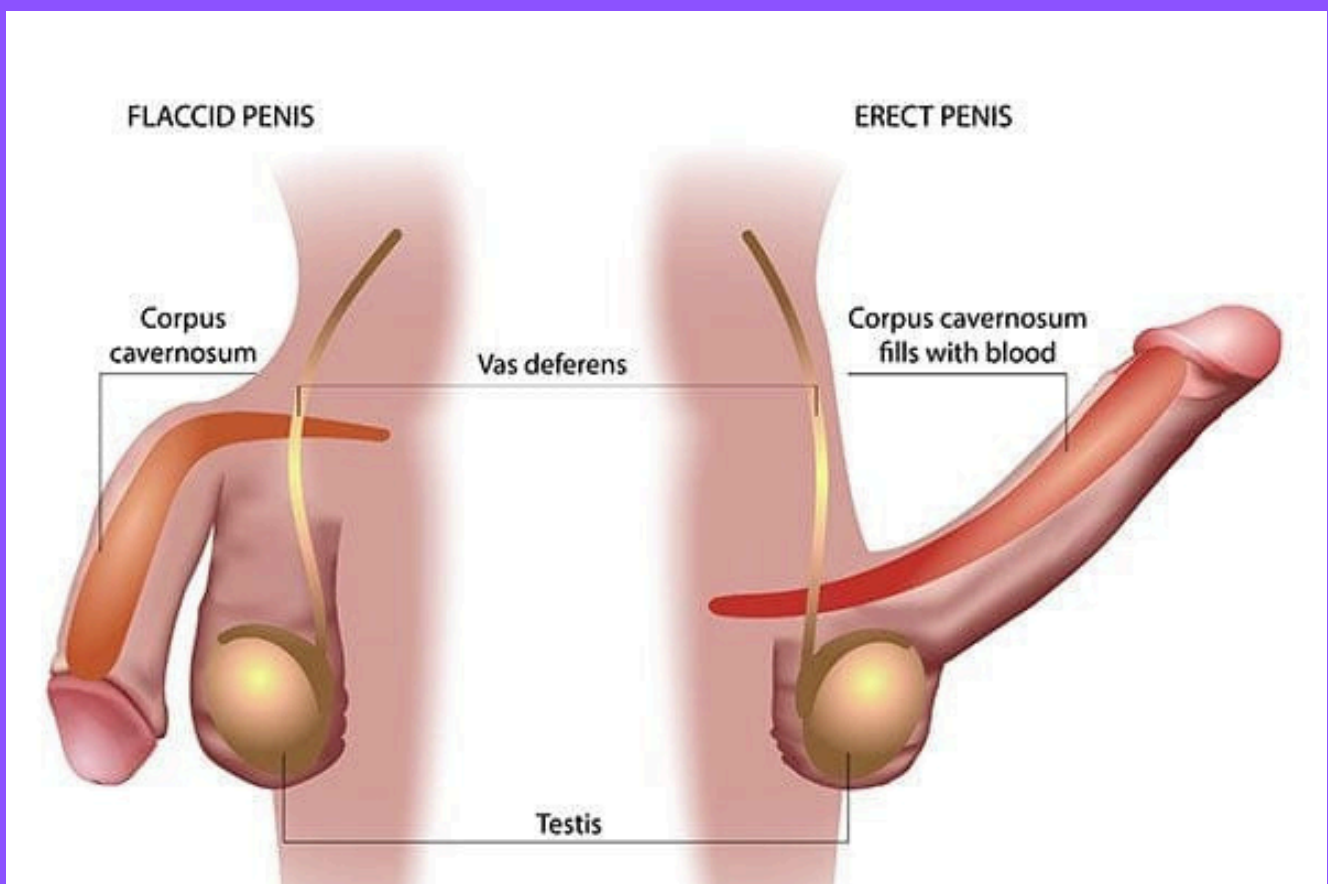
The vas deferens produces sperm to be ejaculated when a man orgasms.

The urethra is where the man's pee is located. When a man's penis is flaccid; he can pee out of it.



In the previous picture of the penis, it is flaccid. I will reiterate, when the penis is flaccid, the man can pee. A flaccid state is also the resting state for the penis. In the next picture below, the penis is “erect.” When the penis is erect, the man can either jack off, get a blow job, or have sex. If you aren’t familiar with the erect feeling, the penis can be erect in the morning. This is called “morning wood.”

When blood engorges the penis, the penis becomes erect. When erect, the penis can be inserted into a wet vagina to have sex. The testicles are located near the beginning of the penis shaft. To have sex: one must insert an erect penis into a wet vagina. With a rapid thrusting motion of the penis; a man can make a women feel amazing and help her have multiple orgasms!



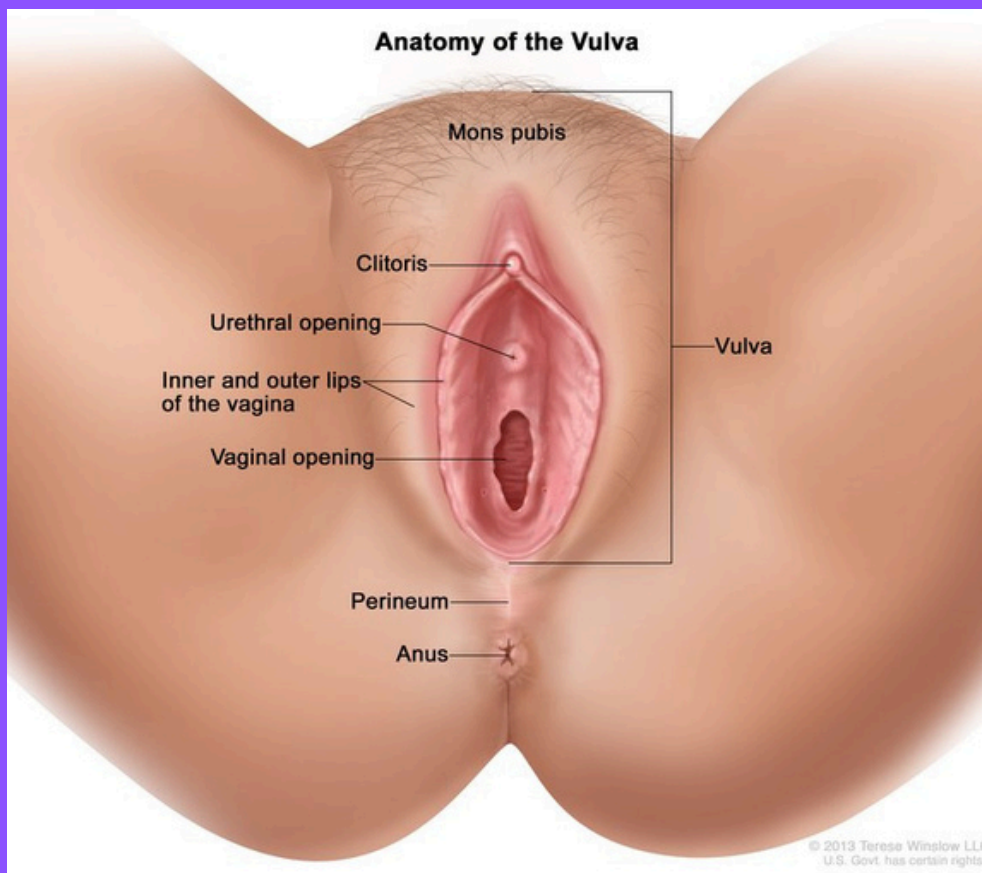
I will reiterate: in order to jack off, you must use your hand to go up and down the penis shaft while your penis is erect or hard. This can also be called “stroking” your erect penis to jack off.

LAST, you must “LUBE” up your erect penis. I reiterate: you must lube up your erect penis to jack off. You should only touch your dick if you are peeing or jacking off. In order to lube your penis you must use spit or lube. You should never ever ever ever jack off your penis when it is not lubricated. After spitting on your hand to lubricate the penis the spit eventually dries up. When the spit dries up you must spit again in your hand and reapply. You must do this again and again or else you will get burn marks on your penis that eventually scab. Scabs are bad! They hurt your penis. This is the exact opposite of what you want to do when jacking off!!! Again, lube or spit and reapply lube to your penis again and again.

I will reiterate when moving your hand up and down the penis, it should always be “lubricated.” A lubricated penis feel good. It shouldn’t be painful. It shouldn’t have scabs. It shouldn’t be bloody. You must never shed your penis. If you have scabs or a penis longer than 5' flaccid, or you are “shedding” by having someone or yourself removing scabs from your penis, you are not doing it right. If you have one of the above issues, go to CLEMENTINE.CO < SIGN UP < DICK RECOIL. Click it and you will get your dick back. Follow the above information to jack off alone or with your partner. Jacking off should be fun and feel good. It shouldn’t be painful and feel bad!

WOMEN JACKING OFF

When women jack off they rub their labia majora and labia minora aka Inner and outer lips of the vagina that can be seen in the image below. They can also rub their clitoris, or penetrate their vagina using fingers, dildos, or vibrators.



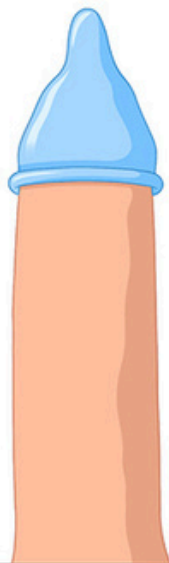
Condoms

External / male condoms



1 Check the expiration date. Carefully tear open one end of the condom package.

2 Make sure the condom is placed rolled side out.



3 Place the unrolled condom on the head or tip of the erect penis. Leave 1/4 inch of room at the tip.



4 Squeeze the air out of the top to form an empty nipple to collect the sperm.



5 Unroll the condom all the way to the base of the penis.

